

XT-6015C
Fanless POS Terminal
User Manual



Package Contents

- ✓ Terminal with base stand.....x1
- ✓ 60W power adaptor.....x1
- ✓ Power cord.....x1
- ✓ Screw for IO cable cover.....x2
- ✓ User manual.....x1
- ✓ Recovery or information CD.....x1

16760905030 Ver. C0
<http://www.posiflex.com>

SOME IMPORTANT NOTES

FCC NOTES

This equipment has been tested and found to comply with the limits for a Class A digital device, pursuant to part 15 of the FCC Rules. These limits are designed to provide reasonable protection against harmful interference when the equipment is operated in a commercial environment. This equipment generates, uses, and can radiate radio frequency energy and, if not installed and used in accordance with the instruction manual, may cause harmful interference to radio communications. Operation of this equipment in a residential area is likely to cause harmful interference in which case the user will be required to correct the interference at his own expense.

This device complies with part 15 of the FCC Rules. Operation is subject to the following two conditions: (1) This device may not cause harmful interference, and (2) this device must accept any interference received, including interference that may cause undesired operation.

CE CLASS A WARNING

This equipment is compliant with Class A of CISPR 32. In a residential environment this equipment may cause radio interference.

WARRANTY LIMITS

Warranty will terminate automatically when the machine is opened by any person other than the authorized technicians. The user should consult his/her dealer for the problem happening. Warranty voids if the user does not follow the instructions in application of this merchandise. The manufacturer is by no means responsible for any damage or hazard caused by improper application.

警告使用者

此為甲類資訊技術設備，於居住環境中使用時，可能會造成射頻擾動，在此種情況下，使用者會被要求採取某些適當的對策。

SAFETY INSTRUCTIONS

This equipment is not suitable for use in locations where children are likely to be present.

CONSIGNES DE SÉCURITÉ

Cet équipement ne convient pas à une utilisation dans des lieux pouvant accueillir des enfants.

BATTERY CAUTION NOTES

- Dispose of used batteries according to the instructions.
- Replacement of a battery with an incorrect type that can defeat a safeguard (for example, in the case of some lithium battery types)
- Disposal of a battery into fire or a hot oven, or mechanically crushing or cutting of a battery that can result in an explosion.
- Leaving a battery in an extremely high temperature surrounding environment that can result in an explosion or the leakage of flammable liquid or gas.
- A battery subjected to extremely low air pressure that may result in an explosion or the leakage of flammable liquid or gas.

BATTERIE ATTENTION NOTES

- Jetez les piles usagées conformément aux instructions.
- Remplacement d'une batterie avec un type incorrect qui peut annuler une sauvegarde (par exemple, dans le cas de certains types de batterie au lithium)
- Mise au rebut d'une batterie dans le feu ou dans un four chaud, ou écrasement ou coupure mécanique d'une batterie pouvant entraîner une explosion.
- Laisser une batterie dans un environnement environnant à des températures extrêmement élevées pouvant entraîner une explosion ou la fuite de liquide ou de gaz inflammable.
- Une batterie soumise à une pression atmosphérique extrêmement basse pouvant provoquer une explosion ou une fuite de liquide ou de gaz inflammable.

警告

本電池如果更換不正確會有爆炸的危險，請依製造商說明書處理用過之電池。

Product Features

Standard Features

System

- Intel Kaby Lake-U Core i5-7360U Processor

Mechanical Structure

- Fanless structure with Aluminum die-cast main unit casing
- Water resistant structure allowing easy cleaning
- Foldable base

Display

- High-quality 15” TFT active matrix LCD monitor provided with true-flat Projected Capacitive touch panel supporting 10-point multi-touch

Optional Items

System

- 1 x DDR4 SO-DIMM slot memory
- Windows 10 IoT 64-bit

Wireless Communication

- WiFi + BT module, through M.2 Interface

Connection Cable

- RJ45-to-DB9 serial port conversion cable
- Split cable for 2 cash drawer control

Base

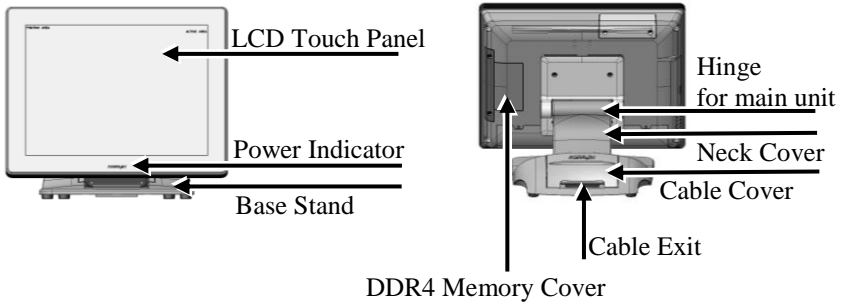
- GEN 8E base including poweredUSB board, and supporting 60W/80W/150W power adaptor

Integration Kit

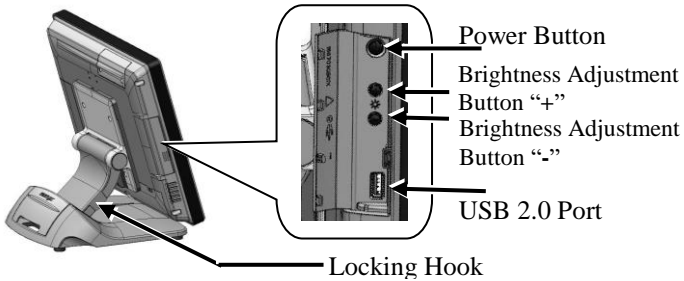
- Integrated side mount upgrade kits, such as SA-105 provided with optional MSR, SA-205 provided with iButton, SA-305, and SA-405
- 1 x M.2 2280 + 1 x SATA for storage. SATA port is reserved for 2.5” HDD/SSD accessible from service window. Storage device is located in the base.
- PoweredUSB kit in GEN 8E base stand, such as PU-480 or PU-490
- Power adapter kits for 80W/150W power adapters
- Back mount displays, such as LM/TM or PD series models.

Views of the XT-6015C

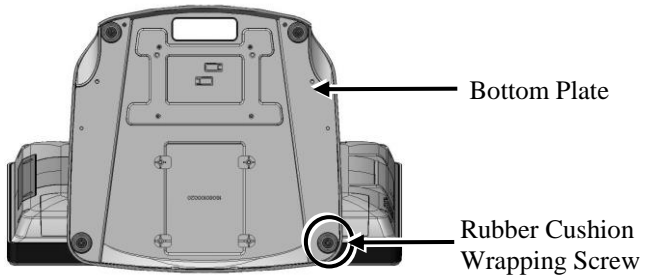
Front and Rear Views of Terminal with Gen 7E Base Stand



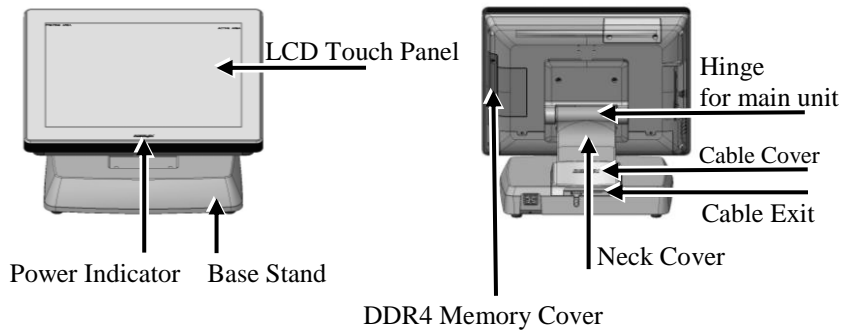
Left Side View of Terminal with Gen 7E Base Stand



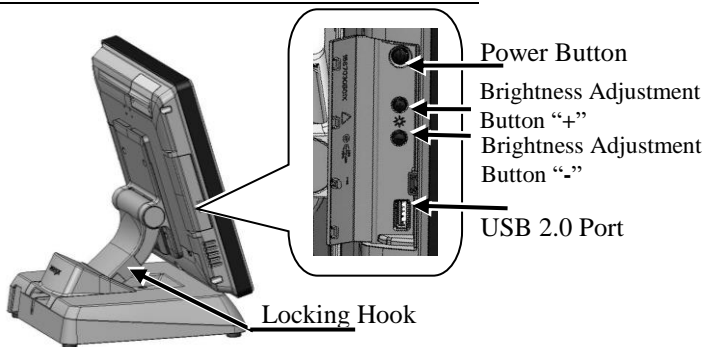
Bottom View of Terminal with GEN 7E Base Stand



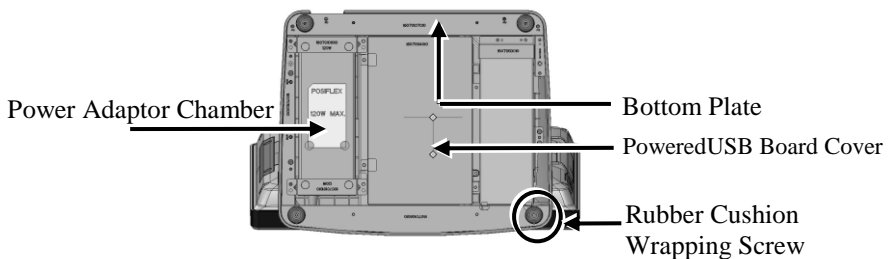
Front and Rear Views of Terminal with GEN 8E Base Stand



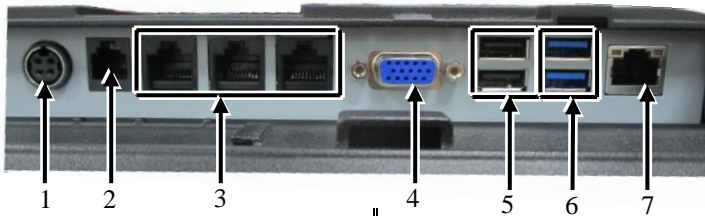
Left Side View of Terminal with GEN 8E Base Stand



Bottom View of Terminal with GEN 8E Base Stand



Views of I/O Interfaces of Terminal



- | | |
|--|---|
| <ul style="list-style-type: none"> 1 DC-IN Power Jack 2 CR Port 3 RJ50 COM Port 4 VGA Port | <ul style="list-style-type: none"> 5 USB 2.0 Port 6 USB 3.0 Port 7 LAN Port - - |
|--|---|

Positioning your POS for a Perfect Viewing Angle

The adjustable bases designed for XT-6015C come in two models, Gen 7E/8E, and allow you to determine an ideal position for your terminal by using its unique tilt adjustment mechanism. As the below figures suggest, both bases provide three standard positioning solutions for your terminal: **Flat Folded mode**, **Low Profile mode**, and **Full Extended mode**.

XT-6015C with Gen 7E Base



Flat Folded mode



Low Profile mode



Full Extended mode

XT-6015C with Gen 8E Base



Flat Folded mode



Low Profile mode



Full Extended mode

In general, XT-6015C will be set up beforehand in **Flat Folded** mode and then packaged into the box for shipping. After it is unpacked, you may re-adjust the terminal in either **Low Profile** mode or **Full Extended** mode according to your situation. Below will provide instructions on how to adjust the specific base connected to the POS system. As a reminder, please be careful not to touch the LCD panel while setting up the tilt angle.

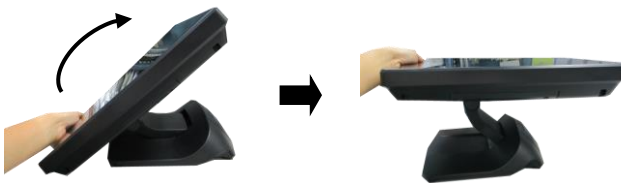
XT-6015E with Gen 7E Base

Please refer to the following instructions on how to switch among different positioning modes to find an ideal viewing angle for XT-6015C with Gen 7E base.

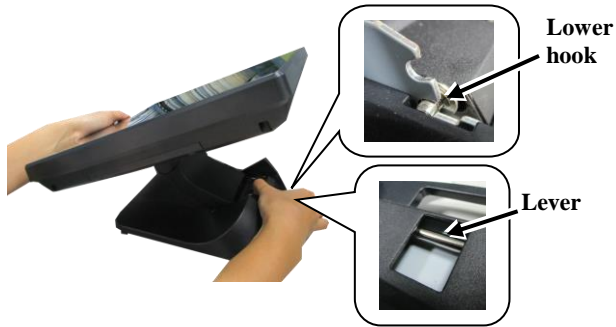
1. Unpack XT-6015C, which is supposed to be set in flat folded mode, out of the package box and then lay your POS system on a flat surface.
2. Steady the base with one hand, and then tilt the screen downwards.



3. Position your terminal in **Full Extended mode**
 - 3.1 After grabbing the bottom edge of the screen with your hand, gently move the screen upward until the screen is locked into place with a click sound.



- 3.2 Support the screen with one hand holding onto its bottom edge. Then, while pulling the lever backwards, move the display upwards until the lever is snapped into the lower hook to raise the screen as shown in the below figure.



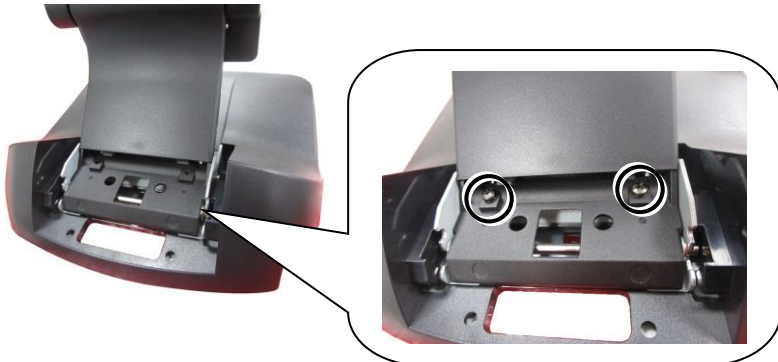
- 3.3 With the screen facing toward you, tilt the screen up or down to your desired angle. Please do not press on the LCD panel while setting up the tilt angle.



- 3.4 Remove the cable cover from the base.



- 3.5 Fix the base with two #/6/32-14L screws.



4. Return your terminal back to **Flat Folded mode** from **Full Extended mode**.

4.1 Remove the cable cover from the base.



4.2 Remove the two screws from the base.



Remove the two screws.



4.3 Tilt your screen in a horizontal position.



- 4.4 Support the screen with one hand holding onto its bottom edge. While pulling the lever backwards, move the display downwards until the lever is lifted off the hook as shown in the figure.



- 4.5 Push the cable cover back.



- 4.6 Tilt the screen again to the horizontal position.



5. Position the terminal in **Low Profile mode.**

5.1 Follow Step 4 to set up the terminal in Flat Folded mode.



5.2 Tilt the screen all the way down



5.3 To tilt screen up or down to your desired angle, please be advised to keep the base steady with one hand to do so. Do NOT press on the LCD panel while setting up the tilt angle.



XT-6015C with Gen 8E Base

Please refer to the following instructions on how to switch among different positioning modes to find an ideal viewing angle for XT-6015C with Gen 8E base.

1. Unpack XT-6015C, which is supposed to be set in flat folded mode, out of the package box and then lay your POS system on a flat surface.



2. While steadying the terminal with your hand holding onto the base, tilt the screen down.

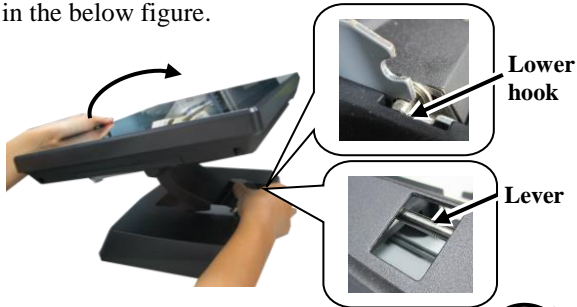


3. Push the cable cover outwards to remove it from the base.



4. Position your terminal in **Full Extended mode**.

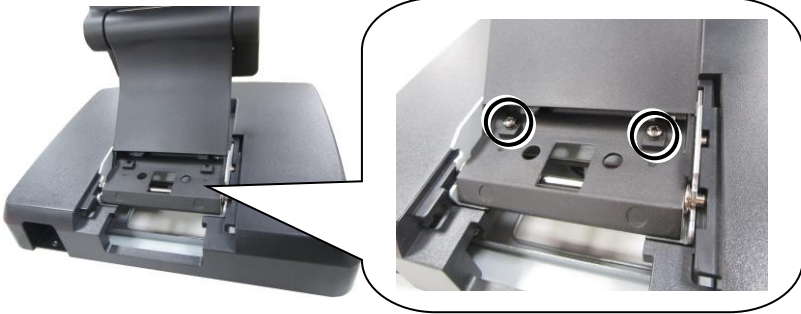
- 4.1 Support the screen with one hand holding onto its bottom edge. Then, while pulling the lever backwards, move the display upwards until the lever is snapped into the lower hook to raise the screen as shown in the below figure.



- 4.2 Tilt the screen up or down to your desired angle. Please do not press on the LCD panel while setting up the tilt angle.



4.3 Fix the base with two #/6/32-14L screws.

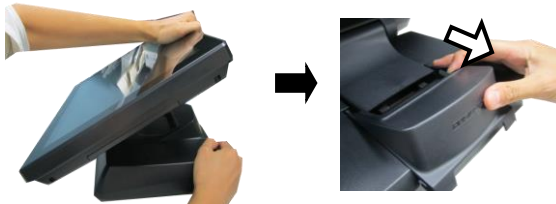


4.4 Push the cable cover back.

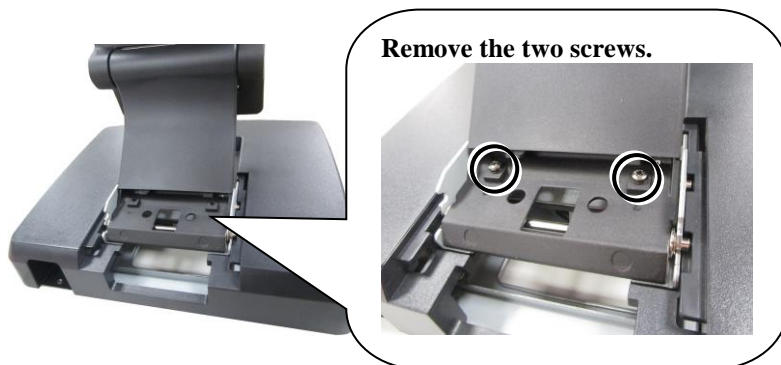


5. Position the terminal in **Low Profile mode**.

5.1 While keeping your terminal steady with your hand holding on to the base, tilt your terminal down. Then, remove the cable cover from the base.



5.2 Remove the two screws from the base.



5.3 Support the screen with one hand holding onto its bottom edge. Then, while pulling the lever backwards, move the display upwards or downwards until the lever is snapped into the upper hook to lower the screen as shown in the below figure.



5.4 Push the cable cover back.

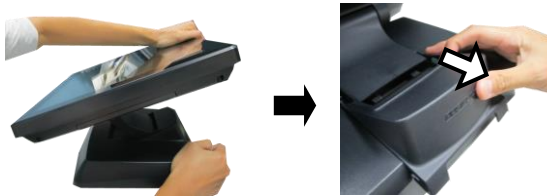


5.5 Tilt the screen up or down to your desired angle. Please do not press on the LCD panel while setting up the tilt angle.

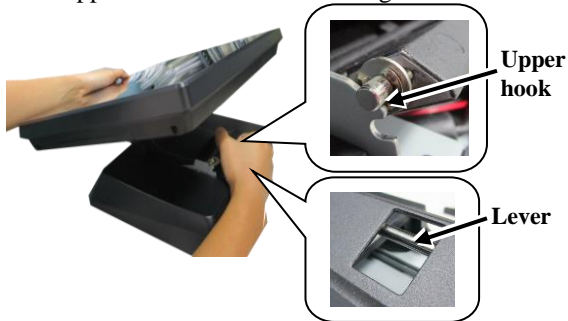


6. Return the terminal back to **Flat Folded mode**.

- 6.1 While steadying your terminal with your hand holding onto the base, tilt your screen up.



- 6.2 Support the screen with one hand holding onto its bottom edge. While pulling the lever backwards, release the lever back to the point above the upper hook as shown in the figure.



- 6.3 Push the cable cover back.



- 6.4 Tilt the screen to the horizontal position.



Installing Power Adapter Kit onto GEN 8E Base Stand

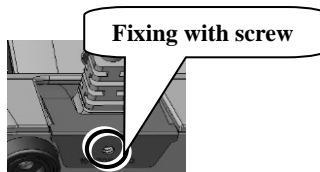
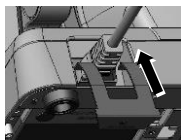
The power adapter kit is optional and, before shipping, is installed onto the optional GEN 8E base stand. Upon your needs, you can purchase and install the kit for 80W or 150W power adapter. The introduction to the kit and the brief description of installation of the kit are made below.

For the detailed description of installation of the 80W/150W power adapter kit, refer to the XT-6015C technical manual.

Secure the Power Cord

To avoid the power cord from being pulled out accidentally, the power adapter kits are shipped with a power cord bracket.

After installing the power adapter kit and connecting the power cord to the power adapter, remember to use the power cord bracket to secure the power cord.



Connecting Power Cable Connector to the Terminal

Before turning ON the terminal, connect the power cable connector to the power jack of the terminal.

CAUTION: On doing insertion or extraction of a cable connector, please always hold the connector head itself instead of pulling the cable wire. Doing this could damage the cables and ports, which is considered as an artificial damage and is not covered by the warranty. The means of power cord should be connected to a socket-outlet with earthing connection.

ATTENTION: Lors de l'insertion ou de l'extraction d'un connecteur de câble, veuillez toujours tenir la tête du connecteur elle-même au lieu de tirer le fil du câble. Cela pourrait endommager les câbles, ce qui est considéré comme un dommage artificiel et n'est pas couvert par la garantie. Le cordon d'alimentation doit être connecté à une prise de courant avec mise à la terre.

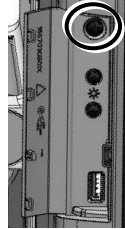
Powering ON the XT-6015C

After connecting the power cable to the power jack of main unit, slightly push to open the power button cover at the left side of the main unit.



Then press the power button to power on the main unit. To power it off, press the button again.

Once powering off the system, if you want to power it on again, please wait for at least 3 seconds.



If the system hangs due to a reason, such as software resource conflict, please press and hold the power button for 10 seconds around to forcedly shut down the system.

Power Indicator

There is a power LED indicator serving for several purposes located at the center of lower rim of LCD panel. The relationship between the indicator status and other conditions is summarized below:



Indicator Status	System Status	External Power	Powering Up
Off	Off	Off	Not possible
Off	Off	Off	Not allowed
Green	Off	On	Allowed
Blue	On	On	N/A
Blue/Flash	On	Off	
Green/Rapid Flash	On	Off	

Installing an Operating System

This product is highly professional equipment. Therefore, we do NOT encourage you to install any operating system into this machine. Posiflex Technology, Inc. shall not be responsible for any technical support to questions on this aspect. We suggest that you contact your dealer for OS installation.

Specifications

XT-6015C	
CPU	Intel Kaby Lake-U Core i5-7360U Processor
Memory	1 x DDR4 SO-DIMM slot
OS	Windows 10 IoT 64-bit
TPM	Yes (optional)
Display	15-inch TFT LCD monitor (1024x768) with true-flat PCAP touch panel
Storage	1 x M.2 2280 + 1 x SATA + power connector SATA port is reserved for 2.5" SSD/HDD accessible from service window. Storage device is located in the base.
Ethernet	10/100/1000 Mb x 1 port
WLAN	1 x M.2 WiFi + BT module (optional)
Power Supply	12 VDC power adaptor, 60W
Display Port	1 x VGA port, 12V power support by jumper setting
Serial port	3 x RJ50, RJ-50-to-DB9 cable (Optional) RS-232 signal only. Jumper selectable 5V/12V support on all COM ports
CR Port	1 port, available for controlling 2 CR.
USB Port	Standard, 4 ports on the I/O plate (2 x USB 2.0, 2 x USB 3.0), 1 port on the left side (USB 2.0)
Audio	Built-in 2W audio speaker
Extension slot	1 x M.2 2230
Mechanical installation	Desktop with base stand
Power LED Indicator	Power ON/ standby, bi-color LED indicators
Temp & Humidity	Operation Temp.: 0 to 40 °C / Storage Temp.: -20 to 60°C Humidity: 10 to 90 %; 5 to 90 % (operation condition)

- ※ *The product information and specification are subject to change without prior notice. To get the detailed information on XT-6015C, please check this model from Posiflex Global Website (<http://www.posiflex.com/en-global/Download/download>).*

<MEMO>